

# VJF INTERNATIONAL INC

Brand Name for Quality Oilfield Products



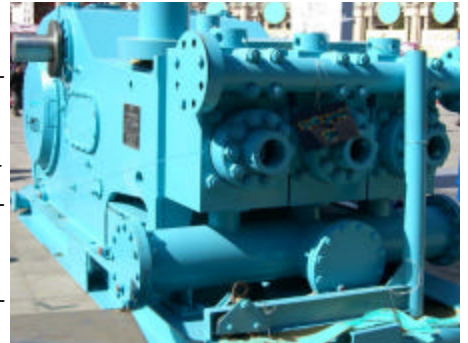
## VF Series Mud Pumps Model: VF-1300/1600

### SPECIFICATIONS:

Model:	VF-1300	VF-1600
Max. Liner Size & Stroke	7" X 12"	7" x 12"
Rated Stroke Per Min	120	120
Rated Power ( HP):	1300	1600
Type of Gear:	Herringbone 4.206:1	Herringbone 4.206:1
Lubrication:	Forced and Flashing	Forced and Flashing
Valve Pots:	API 7#	API 7#
Flange Conn: Suction/Discharge:	12" / 5" 5000 PSI	12" / 5" 5000 PSI
Approximate Weight:	24572lbs (54170KGS)	24791lbs (54660KGS)

### FEATURES:

- Triplex Single Action Piston Type Suitable for High Pressure, High Displacement Drilling Requirement
- Three Each Interchangeable Fluid Ends Made up of Forged Alloy Steel
- Suction Valves and Discharge Valves Interchangeable for all VF Series Pumps
- Bi-Metal Liners, Wear Resisting Cast Iron Sleeves, Slide-to-fit Piston and Rods that are Sealed With Rubber Seal Rings and Fastened with Locknuts.
- Extended Service Life With Spray Lubricated Piston and Liners
- Longer Service Life of Expandable parts of Fluid End Assembly Allowed by Longer Stroke Length and Lower Stroke Per Minute
- Supported with Quick Delivery of Parts and Field Service Personnel, When Required



### DISTRIBUTED BY:

MANUFACTURER:  
VJF INTERNATIONAL INC  
Phone: 403 538 2963  
Fax: 800-VJF-8862, 800 853 8862  
E-mail: sales@vjfi.com

Note: Product Information as Specified herewith is kept accurate up-to-date at time of its printing, and are for reference only. End user is asked to use Users Instruction Manual shipped with each unit. Product info provided in this flyer is subject to change without notice.

**VJF INTERNATIONAL INC****VF-1300 Mud Pump Performance Chart**

Stroke/ Min	Liner Size		180	170	160	150	140	130
	Rated pressure		18.7 (2720)	21.0 (3050)	23.7 (3440)	27.0 (3915)	31.0 (4495)	34.5 (5000)
	Rated power		Displacement (L/S) (GPM)					
	KW	HP						
130	1050	1408	50.42 (799)	44.97 (713)	39.83 (631)	35.01 (555)	30.50 (483)	26.30 (417)
120	969	1300	46.54 (737)	41.51 (658)	36.77 (583)	32.32 (512)	28.15 (446)	24.27 (385)
110	889	1192	42.66 (676)	38.05 (603)	33.71 (534)	29.62 (469)	25.81 (409)	22.25 (352)
100	808	1083	38.78 (614)	34.59 (548)	30.64 (485)	26.93 (427)	23.46 (372)	20.23 (320)
90	727	975	34.90 (553)	31.13 (493)	27.58 (437)	24.42 (384)	21.11 (334)	18.21 (288)
1			0.3878 (6.147)	0.3459 (5.483)	0.3064 (4.857)	0.2693 (4.269)	0.2346 (3.719)	0.2023 (3.206)

**VF-1600 Mud Pump Performance Chart**

Stroke/ Min	Liner Size		180	170	160	150	140	130
	Rated pressure		23.6 (3345)	25.9 (3750)	29.2 (4235)	33.2 (4820)	34.5 (5000)	35.1 (5000)
	Rated power		Displacement (L/S) (GPM)					
	KW	HP						
130	1293	1733	50.42 (799)	44.97 (713)	39.83 (631)	35.01 (555)	30.50 (483)	26.30 (417)
120	1193	1600	46.54 (737)	41.51 (658)	36.77 (583)	32.32 (512)	28.15 (446)	24.27 (385)
110	1094	1467	42.66 (676)	38.05 (603)	33.71 (534)	29.62 (469)	25.81 (409)	22.25 (352)
100	994	1333	38.78 (614)	34.59 (548)	30.64 (485)	26.93 (427)	23.46 (372)	20.23 (320)
90	895	1200	34.90 (553)	31.13 (493)	27.58 (437)	24.42 (384)	21.11 (334)	18.21 (288)
1			0.3878 (6.147)	0.3459 (5.483)	0.3064 (4.857)	0.2693 (4.269)	0.2346 (3.719)	0.2023 (3.206)